

Nifty Sector Analysis

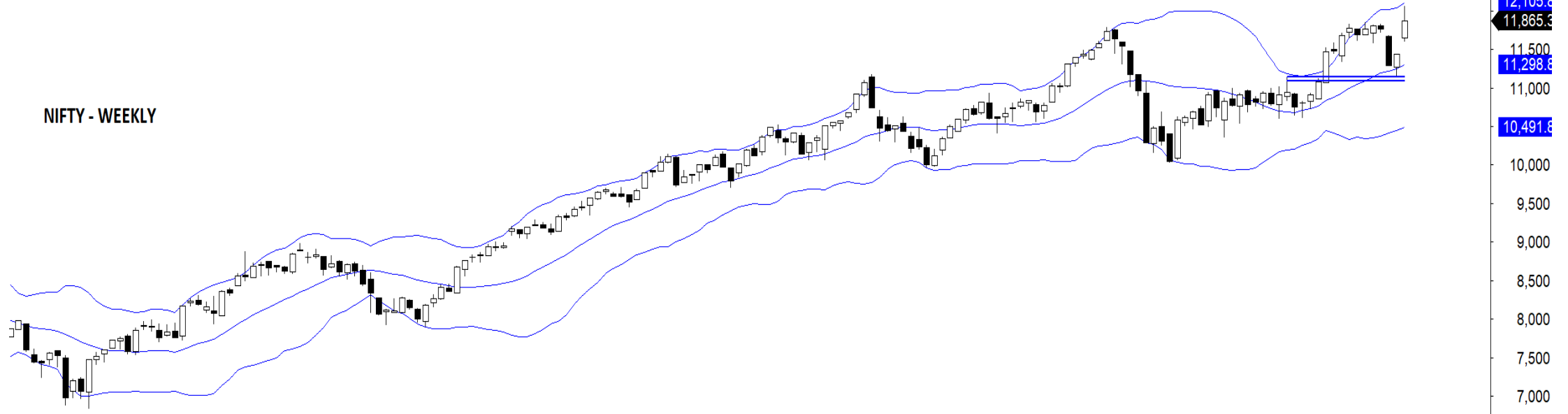
27th May – 31st May 2019

Bharat Jhunjunwala

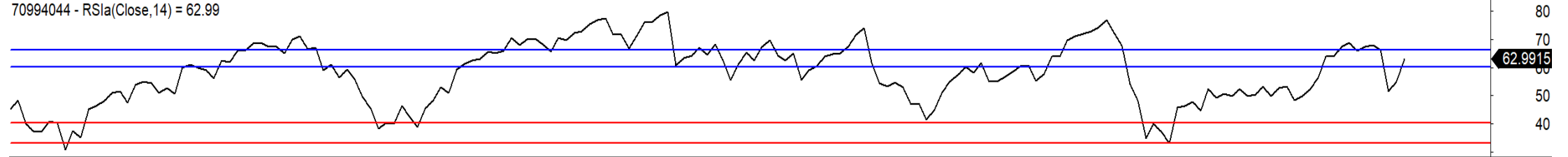
CMT, MFTA, CFTe, MSTA

ProRSI

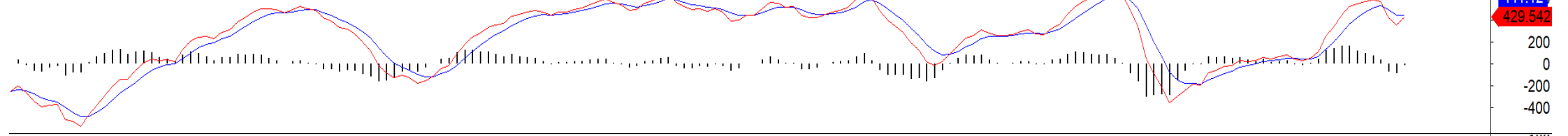
NIFTY - WEEKLY



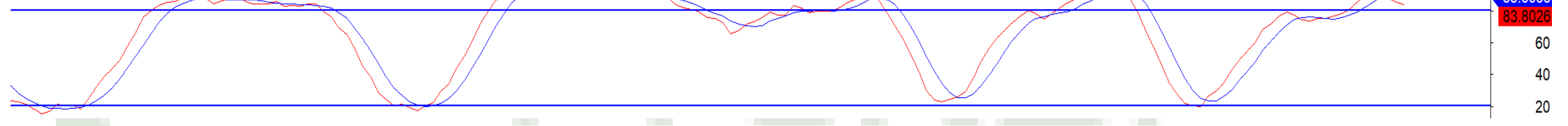
2016 Feb Mar Apr May Jun Jul Aug Sep Oct N Dec Feb Mar Apr May Jun Jul Aug Sep Oc Nov Dec 201 F Mar A May Jun Jul Aug Sep Oct Nov Dec Feb Mar Aç May



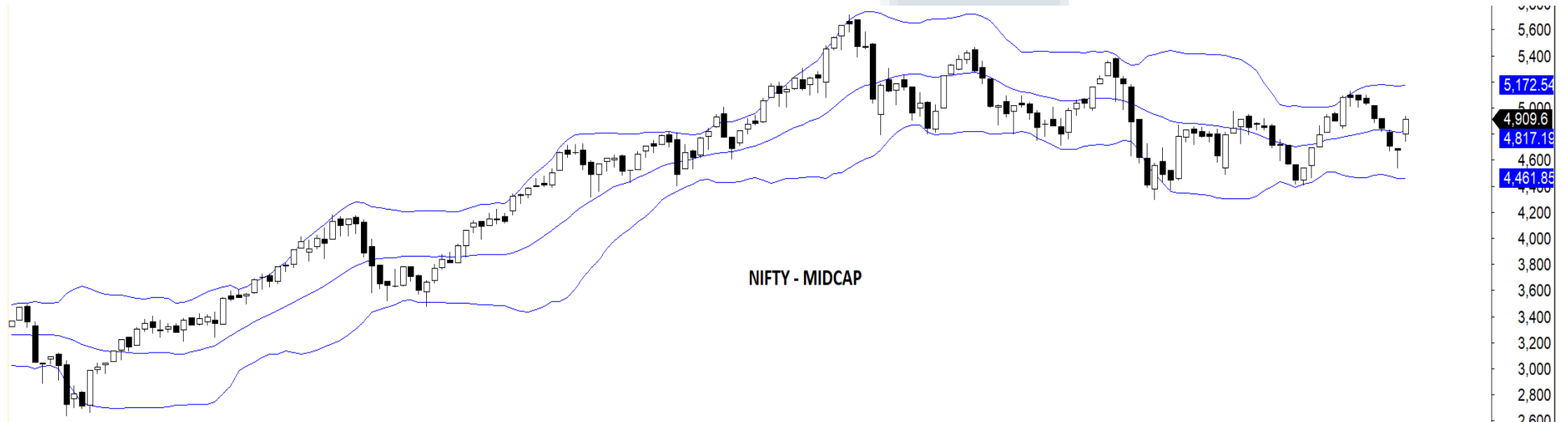
70994044 - RSIa(Close, 14) = 62.99



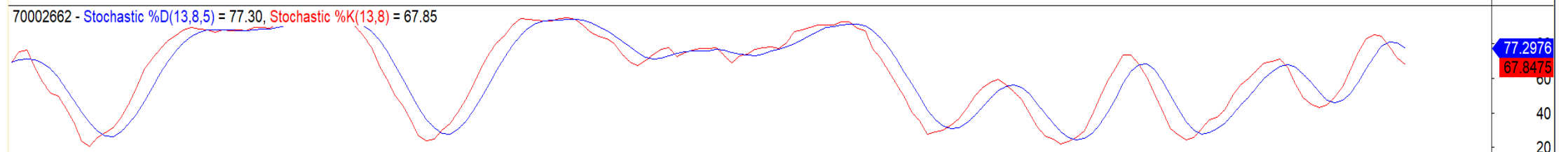
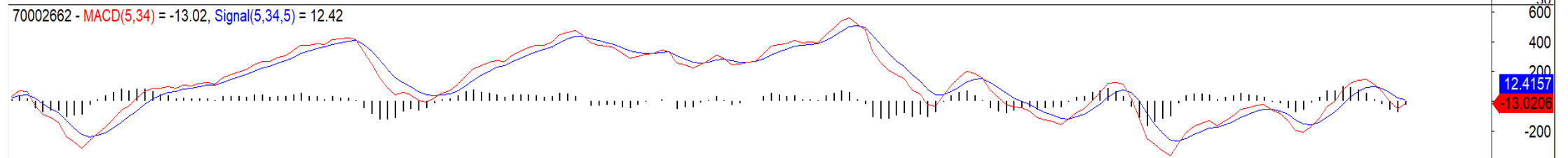
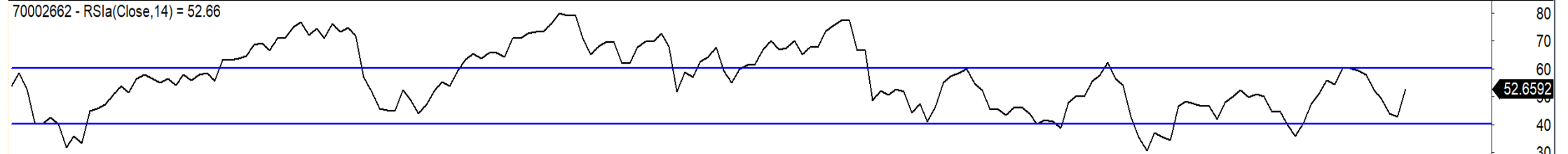
70994044 - MACD(5,34) = 429.54, Signal(5,34,5) = 441.12



70994044 - Stochastic %D(13,8) = 88.60, Stochastic %K(13,8) = 83.80



2016 Feb Mar Apr May Jun Jul Aug Sep Oct N Dec Feb Mar Apr May Jun Jul Aug Sep Oc Nov Dec 201 F Mar A May Jun Jul Aug Sep Oct Nov Dec Feb Mar A May



5,800
5,600
5,400
5,172.54
5,000
4,909.6
4,817.19
4,600
4,461.85
4,400
4,200
4,000
3,800
3,600
3,400
3,200
3,000
2,800
2,600

80
70
60
52.6592
50
40
30

600
400
200
12.4157
-13.0206
-200

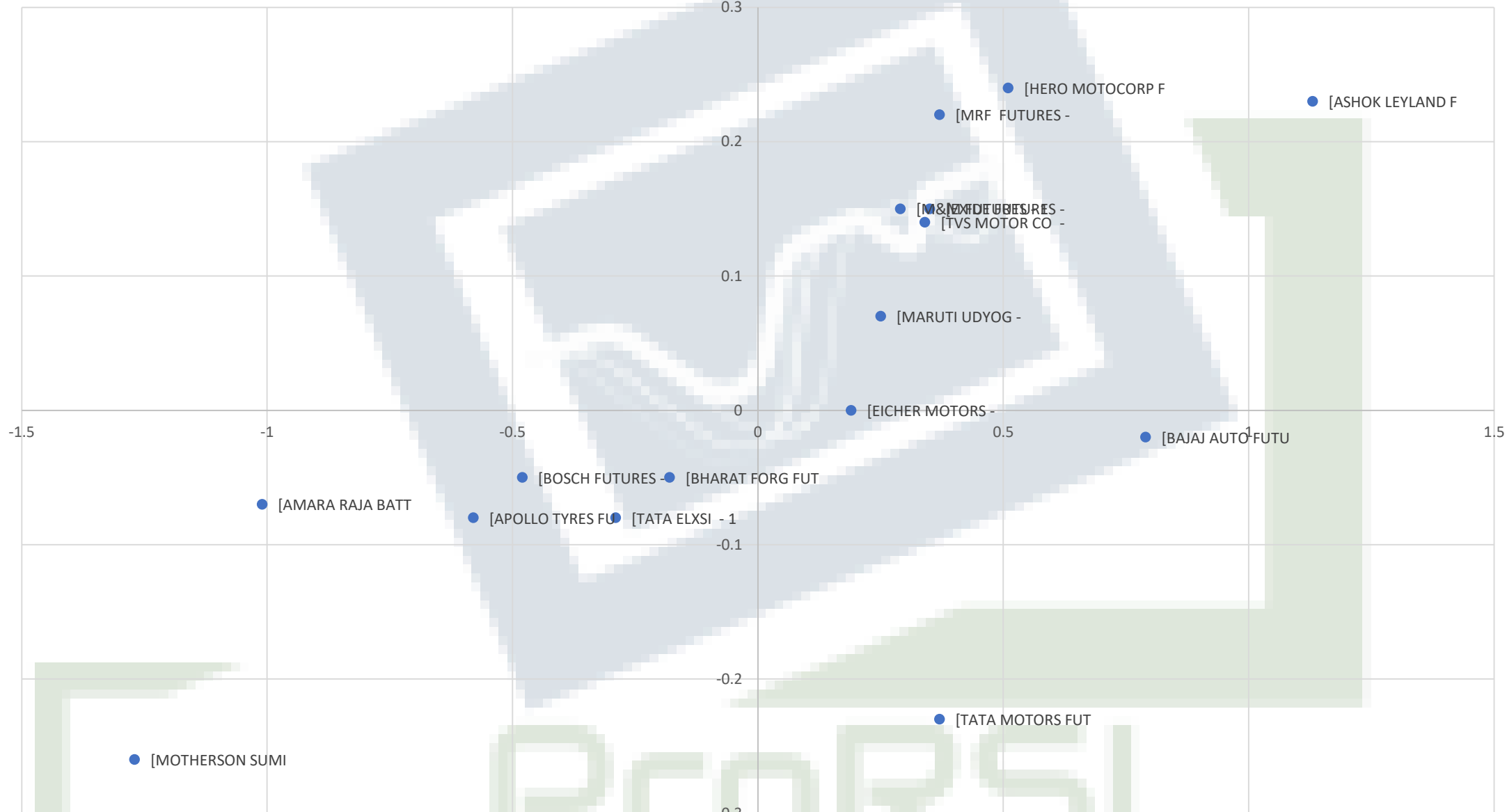
80
77.2976
67.8475
60
40
20

NIFTY



PROARSI

AUTO

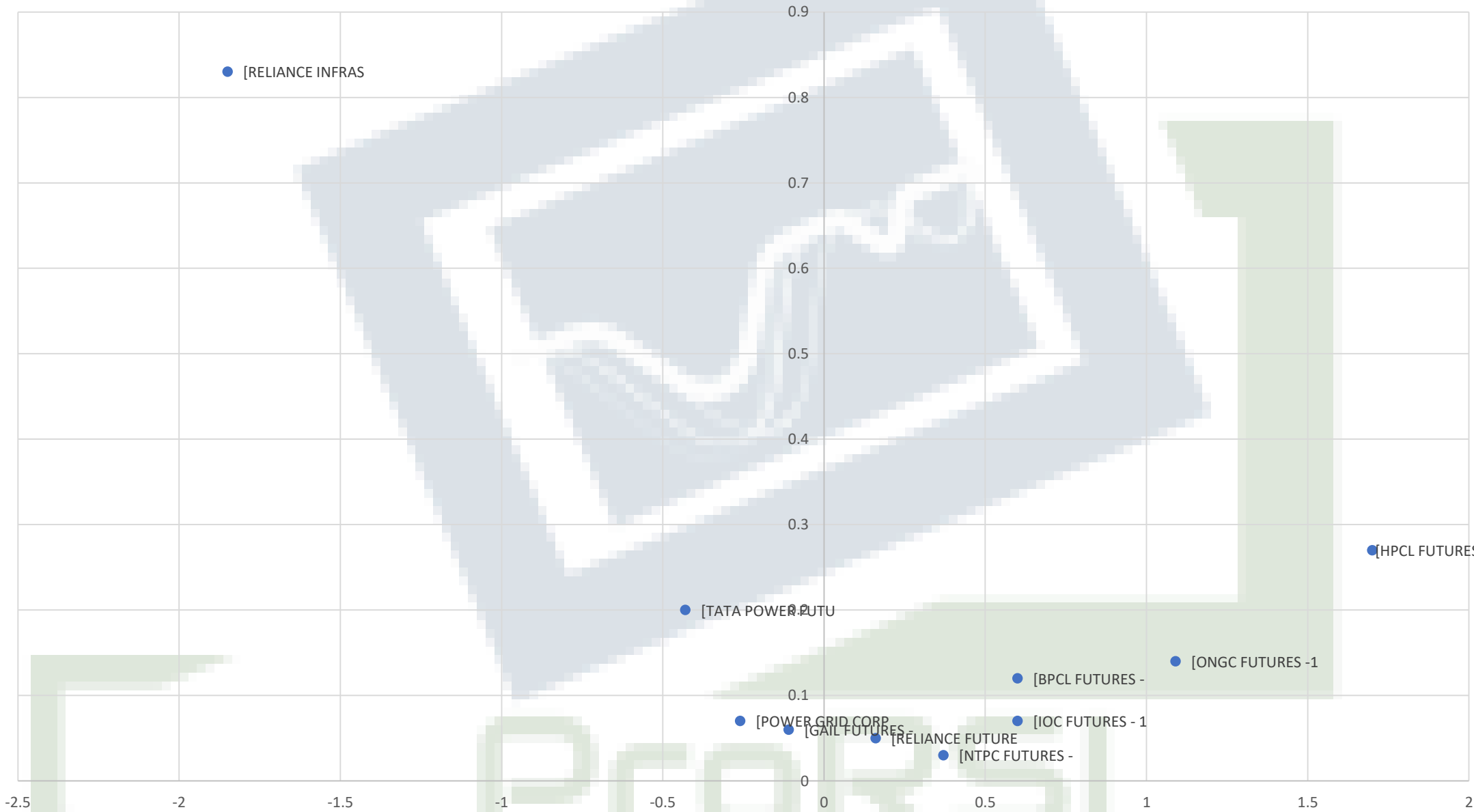


BANKS

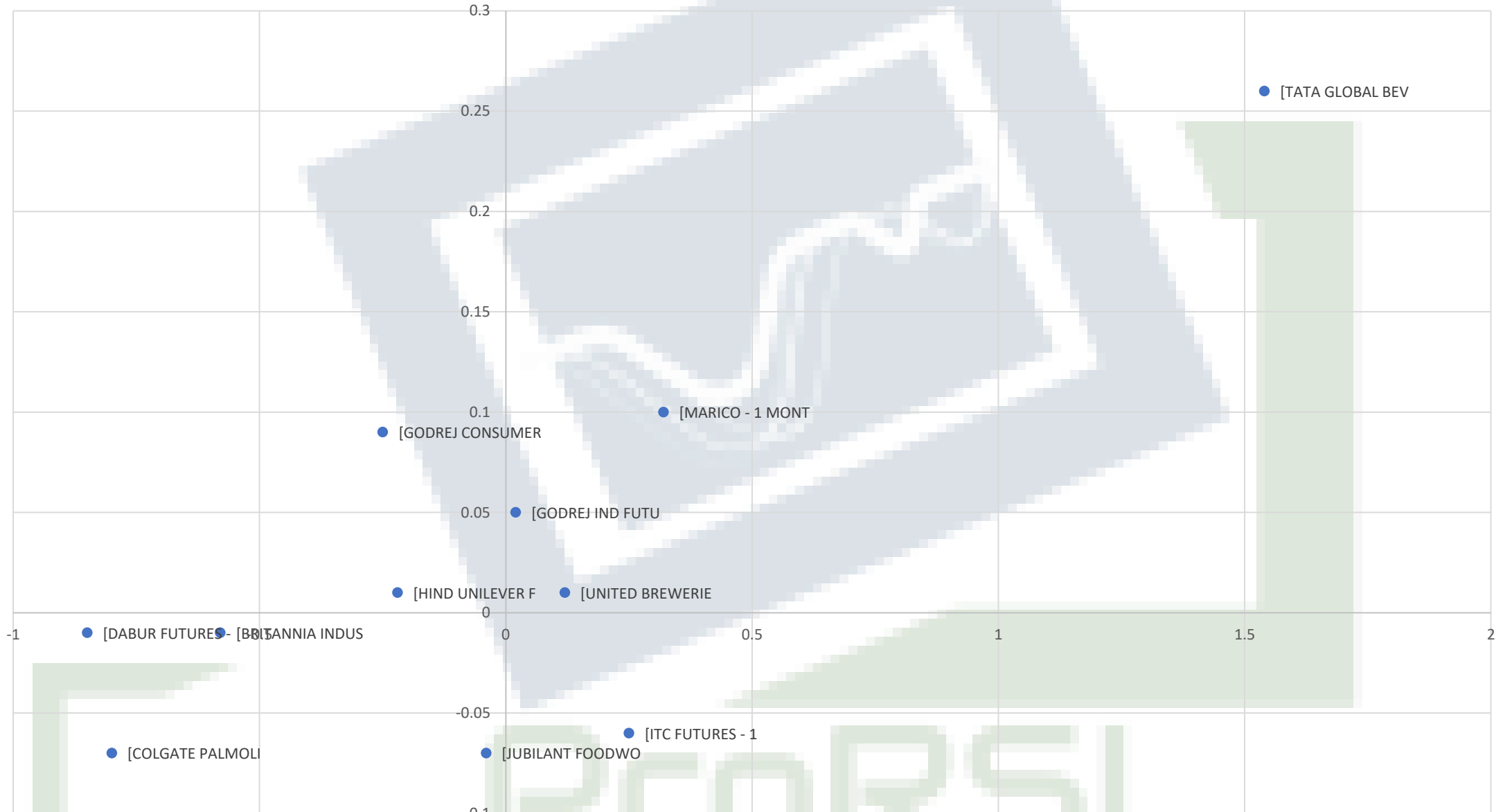


PRORSI

ENERGY



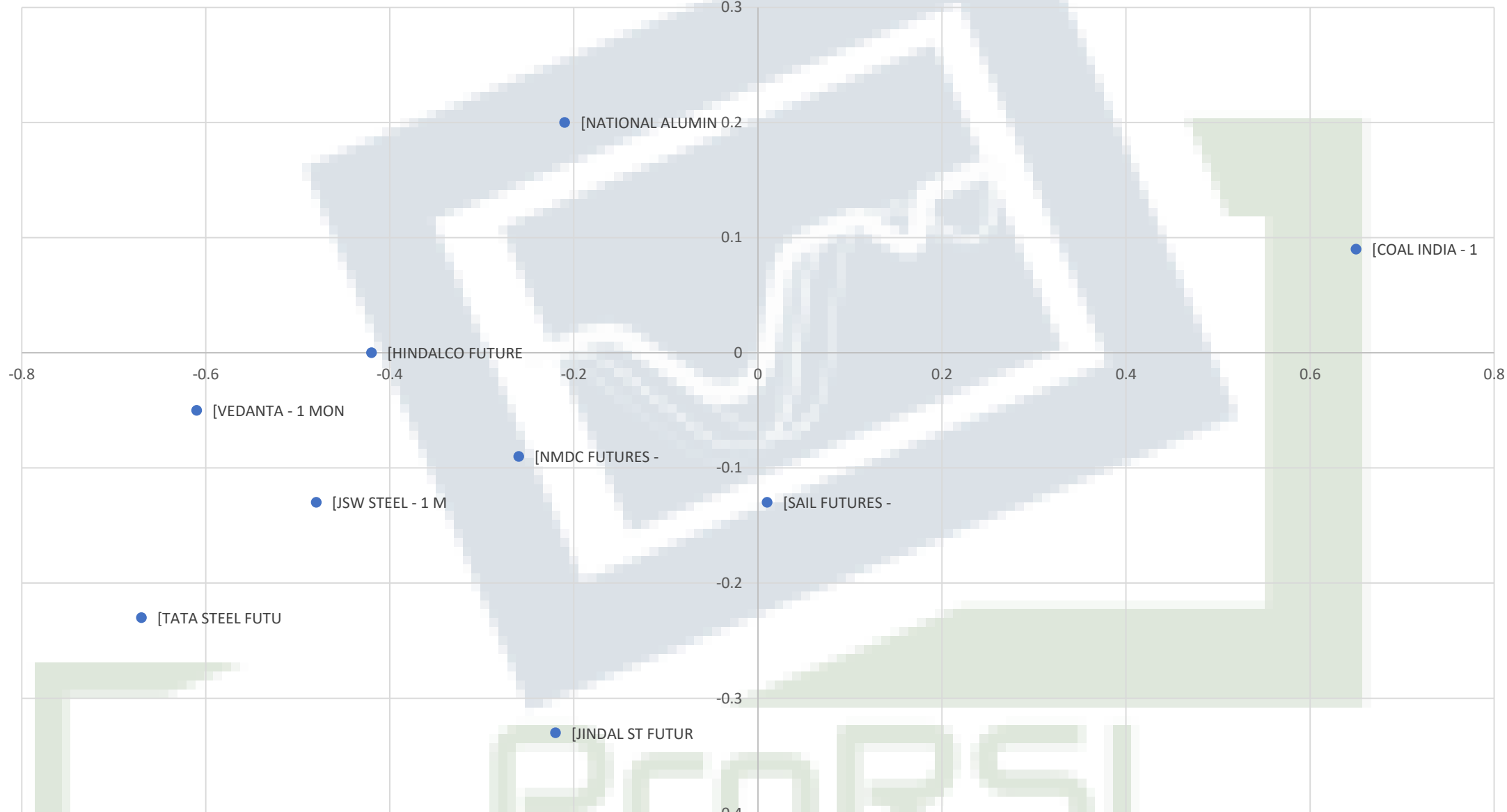
FMCG



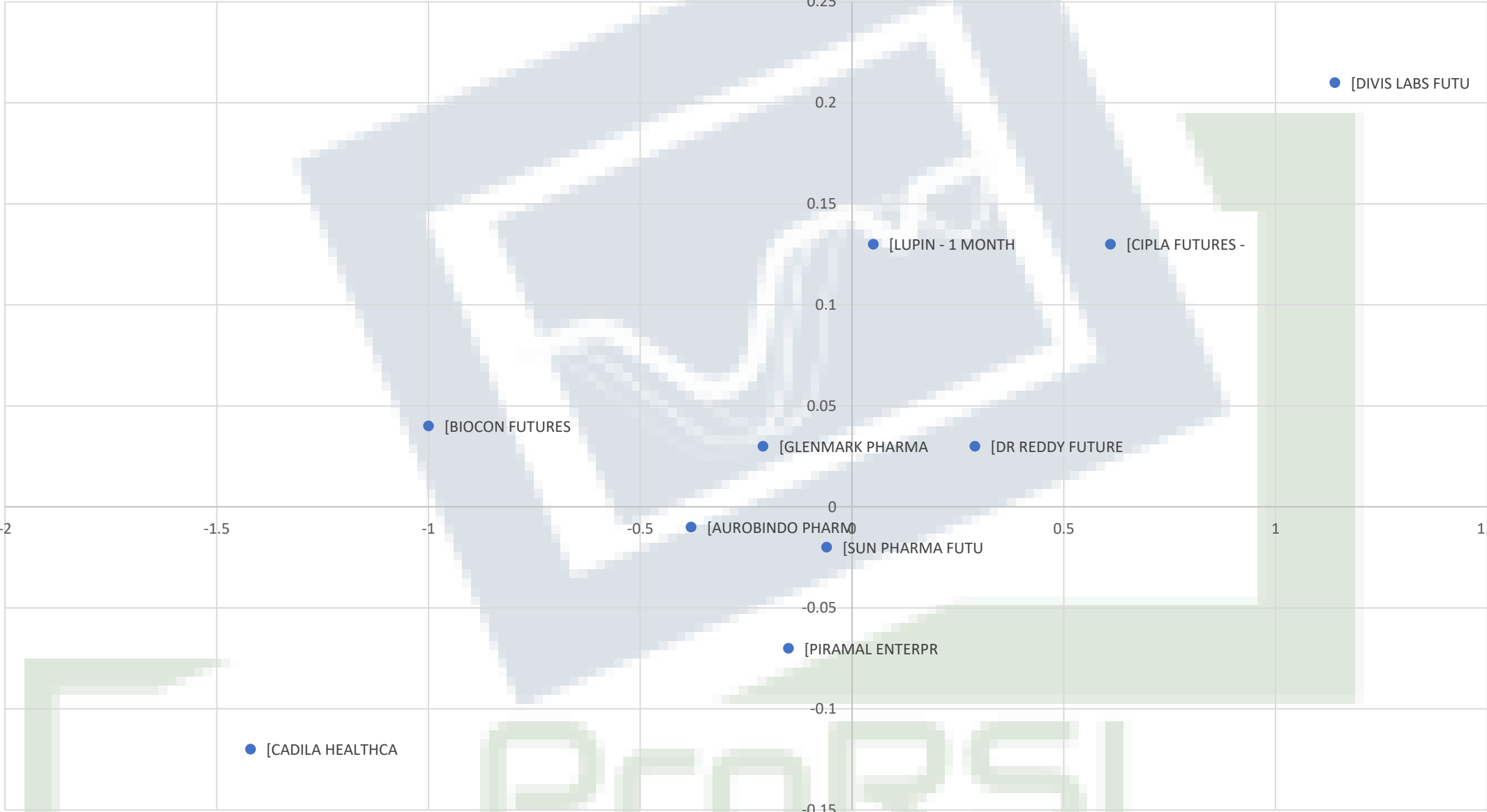
IT



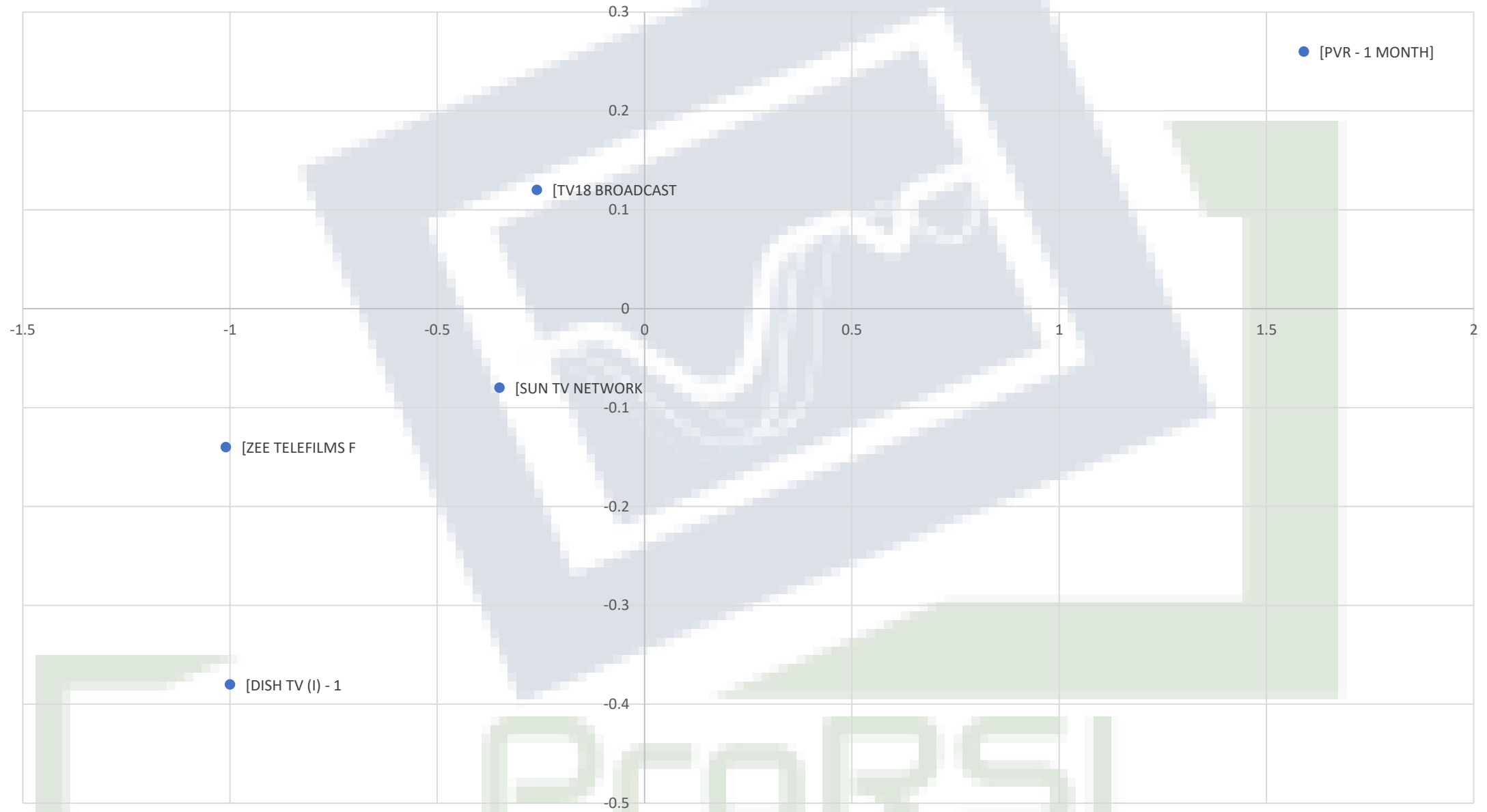
METAL



PHARMA



MEDIA



PRORSI